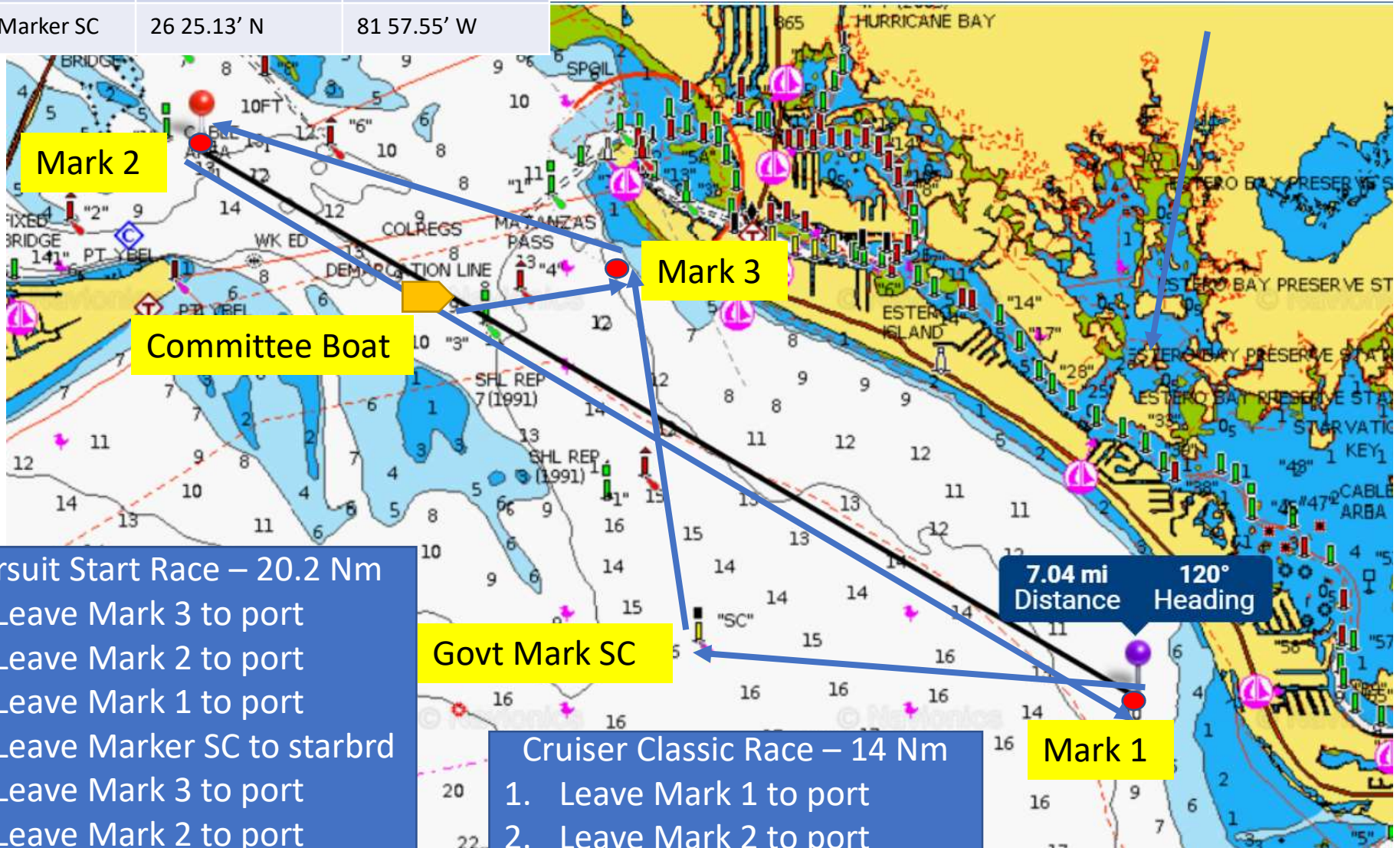


Summerset 2019 Distance Race Courses

TIP - Use an app like Exact Time on your phone to get minutes and seconds for your pursuit start time

Mark	Latitude	Longitude
Mark 1	26 24.73' N	81 54.73' W
Mark 2	26 27.86' N	82 00.64' W
Mark 3	26 27.17' N	81 57.85' W
Govt Marker SC	26 25.13' N	81 57.55' W



Pursuit Start Race – 20.2 Nm

1. Leave Mark 3 to port
2. Leave Mark 2 to port
3. Leave Mark 1 to port
4. Leave Marker SC to starbrd
5. Leave Mark 3 to port
6. Leave Mark 2 to port
7. Finish at committee boat

Cruiser Classic Race – 14 Nm

1. Leave Mark 1 to port
2. Leave Mark 2 to port
3. Finish at committee boat