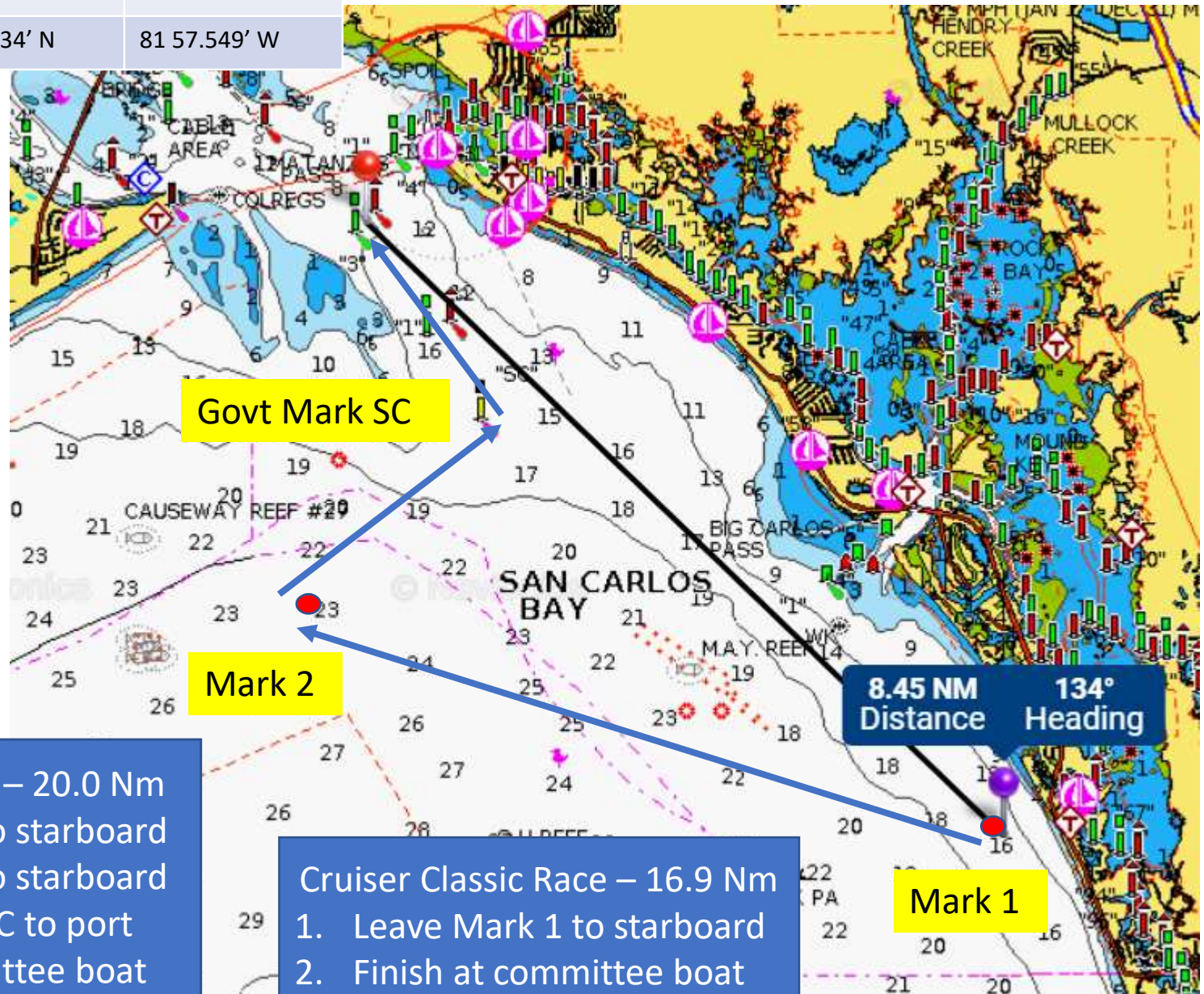


# Summerset Distance Race Courses

Mark	Latitude	Longitude
Mark 1	26 21.188' N	81 52.006' W
Mark 2	26 23.436' N	81 59.373' W
Govt Marker SC	26 25.134' N	81 57.549' W

**TIP**  
Use an app like Exact Time on your phone to get minutes and seconds for your pursuit start time



Pursuit Start Race – 20.0 Nm  
 1. Leave Mark 1 to starboard  
 2. Leave Mark 2 to starboard  
 3. Leave Marker SC to port  
 4. Finish at committee boat

Cruiser Classic Race – 16.9 Nm  
 1. Leave Mark 1 to starboard  
 2. Finish at committee boat

8.45 NM Distance  
134° Heading

Govt Mark SC

Mark 2

Mark 1